



sitepulse

CAPABILITY OVERVIEW

# CONTENTS

1 / WHO WE ARE

2 / WHAT WE DO

3 / OUR VISION & VALUES

4 / OUR SERVICES

5 / PROJECTS

6 / CONTACT US

# WHO WE ARE

## Sitepulse Pty Ltd

Sitepulse is an Australian owned company led by a multidiscipline team of skilled professionals, with experience spanning across all key sectors within the construction industry.

Committed in providing professional services for complete project delivery, through the combination of proven methodologies and innovative solutions in Construction, Engineering, Procurement, Commissioning, Operations and Maintenance.

We pride ourselves on delivering a personalised, tailored service providing employees with the right skills and attitude centred around dependability and project integrity.

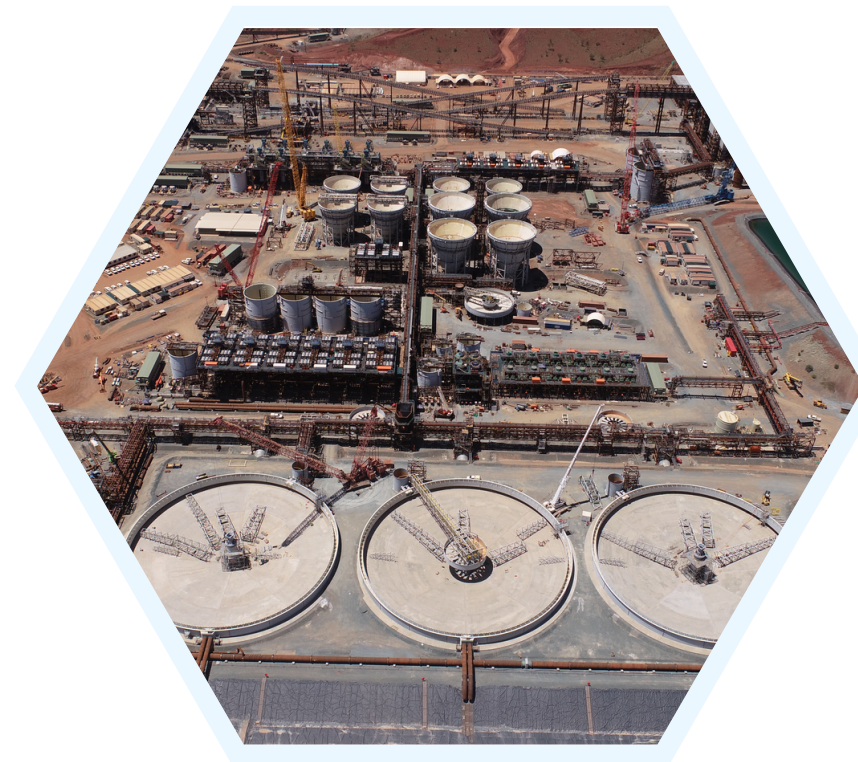
# WHAT WE DO

Sitepulse provides technical services for clients across the Resources, Energy and Infrastructure sectors, covering all key phases of an asset lifecycle, from initial concept engineering, contractor engagement, estimating and procurement through to construction, commissioning and operations.

We provide short or long term secondment as supplementary white collar labour hire, offering a highly personalised service in key project success areas such as:

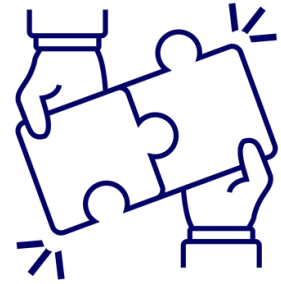
- Project and Construction Management
- Fabrication Management
- Technical Engineering Services
- Expediting Management & Quality Control
- Methodologies and Execution Planning
- Business Improvement in Quality, Safety and Environment
- Bid Strategy and Management

Our portfolio covers fully tailored solutions in sustaining capital projects for process facilities such as gas compression and metering stations, water facilities, wet processing plants, crushers and screens, as well as non-process infrastructure such as offices, workshops, road & rail systems.

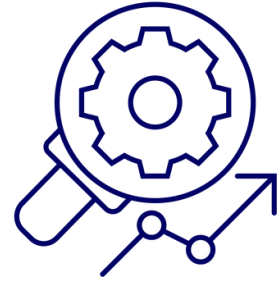




**HEALTH &  
SAFETY**



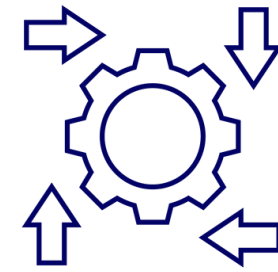
**PROJECT  
INTEGRITY**



**ENGINEERING  
EXCELLENCE**



**QUALITY  
CONTROL**



**DYNAMIC  
EFFICIENCY**



**TEAM  
DEPENDABILITY**

# OUR VISION & VALUES

As with all construction principles, a solid and stable foundation to build on is the key to structural and engineering excellence.

Safety, Quality, and Dependability are the foundations of our company ethos and what drives our efforts towards a successful and equitable outcome for all stakeholders.

Excellence doesn't just happen. We need to make excellence happen. Effectively, we look to 'engineer' excellence.

## CONSTRUCTION

Structural, Mechanical & Piping  
Electrical & Instrumentation  
Earthworks & Civil  
Process & Non-Process Infrastructure  
Heavy Lifting

## PROCUREMENT

Early Contractor Involvement (ECI)  
Procurement Management  
Quantity Surveying  
Material Takeoff  
Optimisation

## COMMISSIONING

Start-up Support  
Construction Completions  
Hook-up & Tie-ins  
Blowing & Flushing  
Testing

## ENGINEERING

Engineering Management  
ECI Services & Consultations  
System Optimisation  
Fabrication Services

## OPERATIONS

Preservation & Quarantine  
QC Engineering Management  
Logistics Planning & Operations  
Workshop Services

## MAINTENANCE

Shutdowns  
Plant & Equipment Maintenance  
Sustaining Capital Works  
Refurbishment

**OUR  
SERVICES**



# PROJECTS

## OIL & GAS

- Woodside - Pluto NGL & N2R Modules (WA)
- Wesfarmers - LNG Process Plant (WA)
- INPEX - Ichthys LNG Project (NT)
- Woodside - Pluto LNG Process Plant (WA)
- Jemena - East Gippsland Compressor Station (VIC)
- DBNGP - CS10 Compressor Station (WA)
- APA - Moomba Compressor Station (SA)
- APA - Mondarra Storage Facility (WA)
- Jemena - Banana & Rolleston Compressor Stations (QLD)
- Jemena - Munmorah Compressor Station (NSW)
- Chevron - Gorgon Metering Station (WA)
- DBNGP - Kwinana HEGT Metering Station (WA)

## RENEWABLE ENERGY & INFRASTRUCTURE

- CBH - Broome Hill Rail Outloading Facility Construction (WA)
- RTIO - Rail, Road & Culverts Maintenance (WA)
- Acciona - Kwinana Waste To Energy (WA)
- BHP - Nickel West Hydrogen Plant (WA)



## MINING

- AngloGold - Operations for Expediting (WA)
- BHP - Kalgoorlie Nickel Smelter Major Outage MSD22 (WA)
- BHP - Wind Fence Fabrication (WA)
- Roy Hill - ROM4 Crusher Install (WA)
- RTIO - Installation of Ore Car Knuckle Handlers (WA)
- RTIO - Installation of High Level Access Platforms (WA)
- BHP - Fabrication South Flank Reclaimer (WA)
- FMG - Iron Bridge Offloading Process Facility SMP Fabrication (WA)
- FMG - Iron Bridge Concentrate Handling Facility SMP Fabrication (WA)
- FMG - Iron Bridge Wet Plant Facility SMP Installation (WA)
- FMG - Iron Bridge Dry Plant Conveyor Modularisation (WA)

## WATER

- Roy Hill - Saline Water RO Treatment Plant (WA)
- Water Corp - Perth Seawater Desalination Plant (WA)
- Water Corp - Mirrabooka Chlorination Facility (WA)
- Water Corp - Gosnells Temporary Waste Water Pump Station (WA)
- Water Corp - Esperance and Katanning Inlet Screen Upgrade (WA)
- Water Corp - Frankland Water Treatment Plant Upgrade (WA)
- Water Corp - Jerramungup Water Treatment Plant Upgrade (WA)
- Water Corp - Ongerup WTP Upgrade (WA)

# OUR PEOPLE

Managed by strong leadership and committed to the highest quality & safety standards, Sitepulse has capability and capacity to assist clients from the very first engineering concepts, estimating, procurement, expediting and construction to commissioning and operations. Our goals are always aligned with our client's plans keeping to schedule and within budget.

Our team is made up of multidisciplinary experts, across greenfield and brownfield projects throughout Australia, along with the capacity to call on our personnel and trade network to source candidates for multiple roles as well as offering complete project team solutions.

- Project Managers
- Construction Managers
- Engineering Coordinators
- Project Engineers (Civil, E&I and SMP)
- Draftsmen
- Work Packers
- Schedulers & Planners
- Superintendents and Supervisors
- Procurement Managers
- Commercial Managers
- Project Controls
- Cost Controllers
- Cost Estimators
- Cost Analysts
- QA/QC Professionals
- HSE Managers and Advisors



## SRDA (SERGE) DERIC MANAGING DIRECTOR

Serge has 17 years' extensive experience managing engineering and construction projects across Australia, Oman and Indonesia. He has held a broad range of operational, technical and senior management positions within the upstream and downstream oil and gas, mining, and civil infrastructure sectors as well as water and renewable energy sectors.

Serge is passionate about delivering business improvements and initiatives which focus on supporting our project teams. As Managing Director Serge is focused on customer relationships, strong service delivery and sustainable growth for Sitepulse and its employees.



SCAN ME



## SASA DERIC OPERATIONS MANAGER

Sasa is a highly respected professional with extensive experience in multiphase projects, site management, team leadership, safety compliance and stakeholder engagement gained from numerous years of experience within the Oil & Gas, Water and Rail sectors.

Possessing combined technical and leadership capabilities with problem-solving strengths, Sasa's focus is driving projects to completion, on-time, within budget and of highest quality. As Sitepulse's Operations Manager, Sasa is committed to the safety and welfare of his employees and believes that a strong safety culture provides favourable productive results in the workplace.



SCAN ME



## SEBASTIAN (SEB) PAGANA GENERAL MANAGER

Seb is an accomplished construction and project manager, with a trade qualification in carpentry, which has allowed him to excel at managing multi-story development sites in both the residential and commercial sectors. His expertise range from managing complex project budgets, timeline constraints to personnel management. Seb also spent numerous years working on Western Australian Government Railways (PTA) projects, comprising of station construction and repair, rail bridge repair and elevated track construction and maintenance.

Applying in-depth field knowledge gained over 35+ years in the Australian construction industry, Seb brings a diverse range of experience to his role as General Manager.



SCAN ME



# CONTACT US

Sitepulse Pty Ltd

Thank you for the opportunity and consideration in our services. Should you have any further queries or wish to discuss your project in detail please contact us via the details below.

W: [www.sitepulse.com.au](http://www.sitepulse.com.au)

E: [admin@sitepulse.com.au](mailto:admin@sitepulse.com.au)

A: Suite 6 / 1329 Hay St West Perth 6005

T: +61 8 6161 7776

